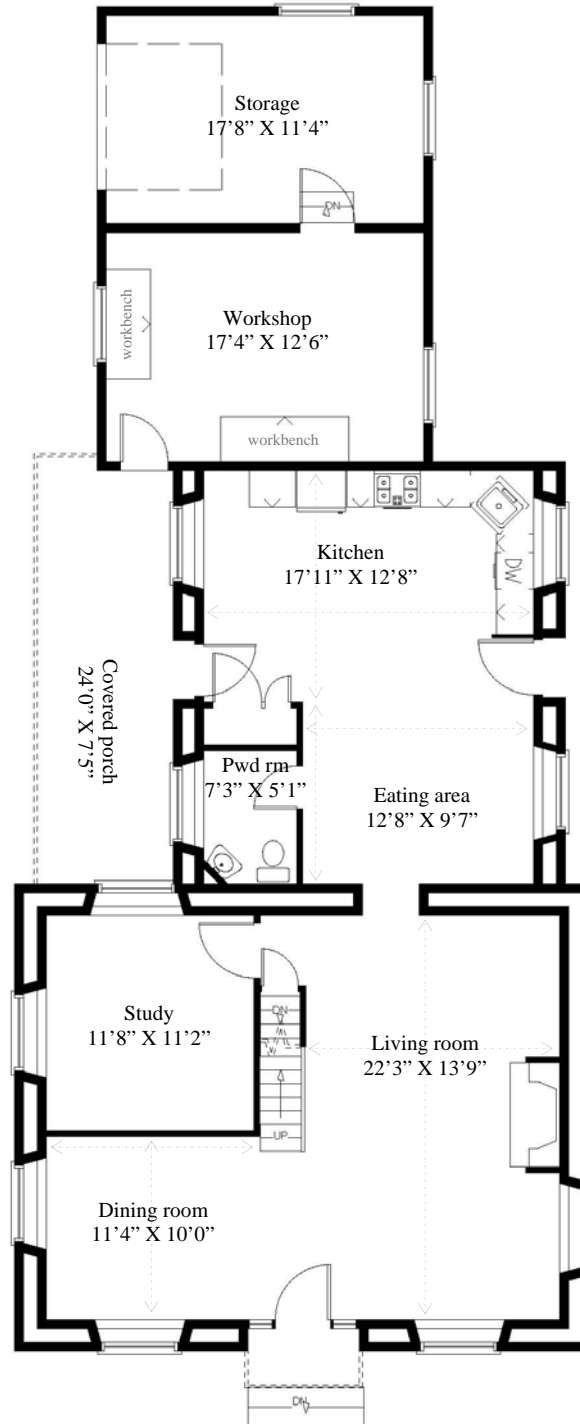


228 James Street
Barriefield (Kingston), ON

MAIN LEVEL



Gordon's Estate Services *Integrated real estate & transition solutions*

490 Discovery Drive, Unit 7
Kingston, ON K7K 7E9

Phone: 613-542-0963 / 800-267-2206

Fax: 613-542-6821

Email:
helpmovingon@gordonsstateservices.com



Visit us at:

WWW.GORDONSESTATESERVICES.COM

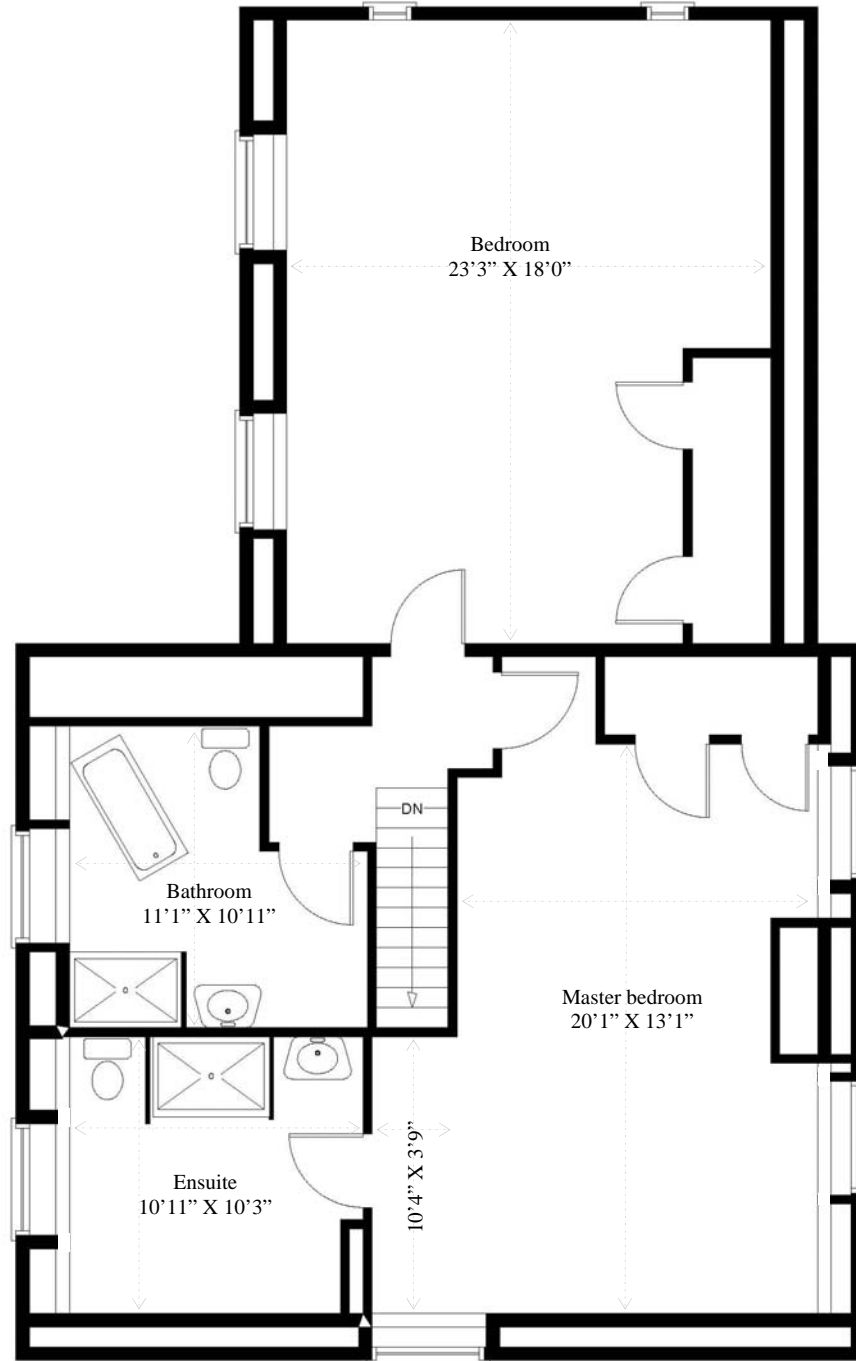
Note: This floor plan is an artistic rendering only. All dimensions are approximate. Defined Lines and the listing agent make no representation or warranty as to this rendering's accuracy and no measurements or dimensions should be relied upon without independent verification.

DL
Defined Lines
Plan for the Sale™
www.definedlines.ca

(Scroll to view other levels)

228 James Street
Barriefield (Kingston), ON

UPPER LEVEL



Gordon's Estate Services

Tel: 613-542-0963, **E-mail:** helpmovingon@gordonsstateservices.com, **Website:** WWW.GORDONSESTATESERVICES.COM

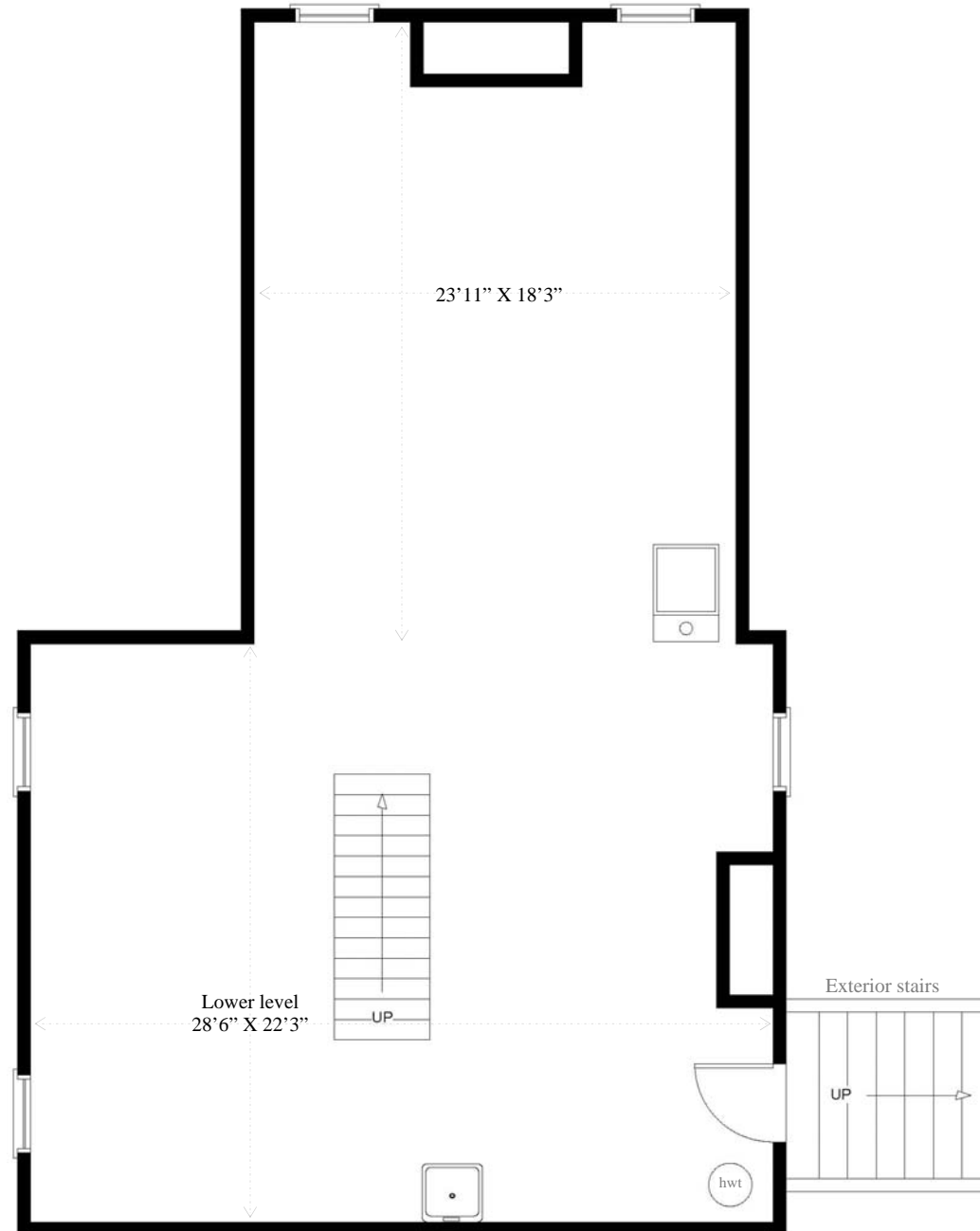
Note: This floor plan is an artistic rendering only. All dimensions are approximate. Defined Lines and the listing agent make no representation or warranty as to this rendering's accuracy and no measurements or dimensions should be relied upon without independent verification.



(Scroll to view other levels)

228 James Street
Barriefield (Kingston), ON

LOWER LEVEL



Gordon's Estate Services

Tel: 613-542-0963, **E-mail:** helpmovingon@gordonsstateservices.com, **Website:** WWW.GORDONSESTATESERVICES.COM

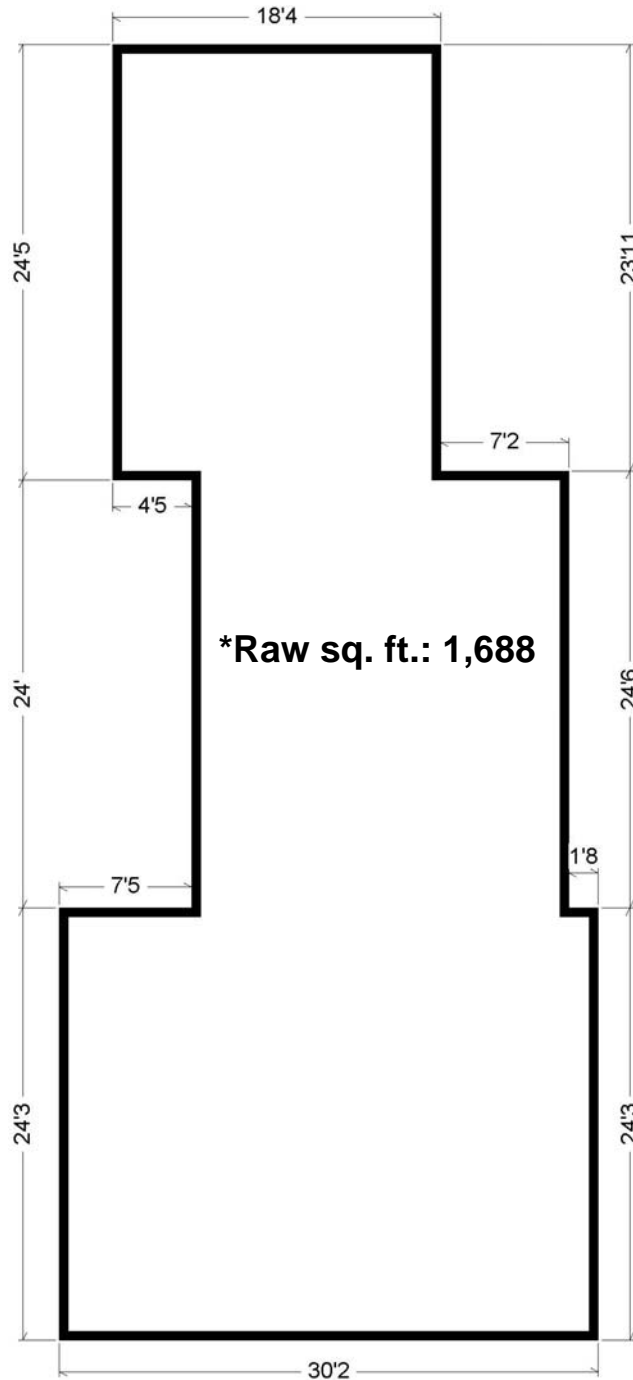
Note: This floor plan is an artistic rendering only. All dimensions are approximate. Defined Lines and the listing agent make no representation or warranty as to this rendering's accuracy and no measurements or dimensions should be relied upon without independent verification.



(Scroll to view other levels)

228 James Street
Barriefield (Kingston), ON

MAIN LEVEL (RAW SQ. FT.)



Gordon's Estate Services

Tel: 613-542-0963, E-mail: helpmovingon@gordonsstateservices.com, Website: WWW.GORDONSESTATESERVICES.COM

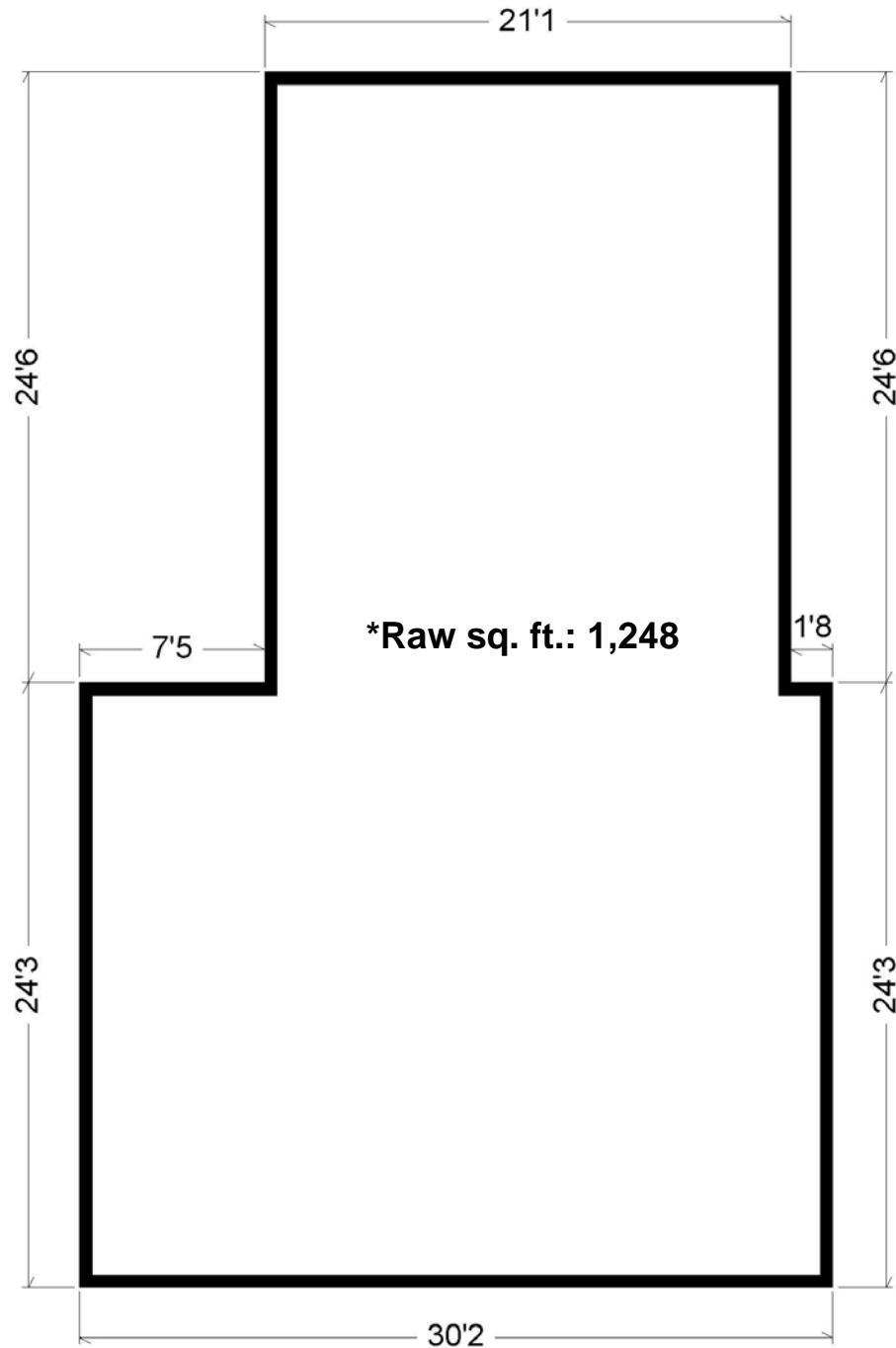
Note: This floor plan is an artistic rendering only. All dimensions are approximate. Defined Lines and the listing agent make no representation or warranty as to this rendering's accuracy and no measurements or dimensions should be relied upon without independent verification.



(Scroll to view other levels)

228 James Street
Barriefield (Kingston), ON

UPPER LEVEL (RAW SQ. FT.)



Gordon's Estate Services

Tel: 613-542-0963, E-mail: helpmovingon@gordonsstateservices.com, Website: WWW.GORDONSESTATESERVICES.COM

Note: This floor plan is an artistic rendering only. All dimensions are approximate. Defined Lines and the listing agent make no representation or warranty as to this rendering's accuracy and no measurements or dimensions should be relied upon without independent verification.



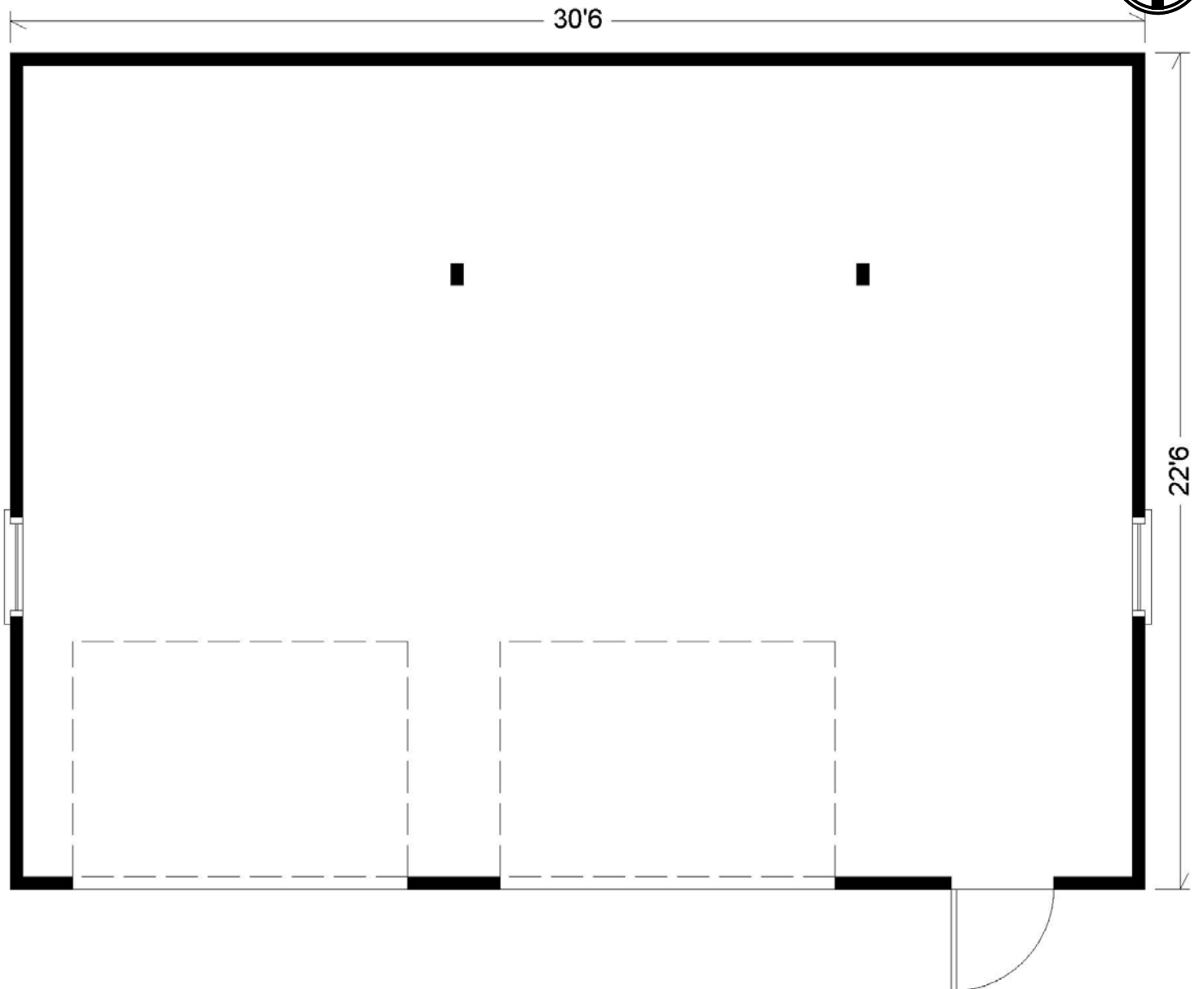
(Scroll to view other levels)



228 James Street
Barriefield (Kingston), ON

GARAGE

*Raw sq. ft.: 686



Gordon's Estate Services

Tel: 613-542-0963, E-mail: helpmovingon@gordonsstateservices.com, Website: WWW.GORDONSESTATESERVICES.COM

Note: This floor plan is an artistic rendering only. All dimensions are approximate. Defined Lines and the listing agent make no representation or warranty as to this rendering's accuracy and no measurements or dimensions should be relied upon without independent verification.



(Scroll to view other levels)