

15 Sullivan Street, Port Hope

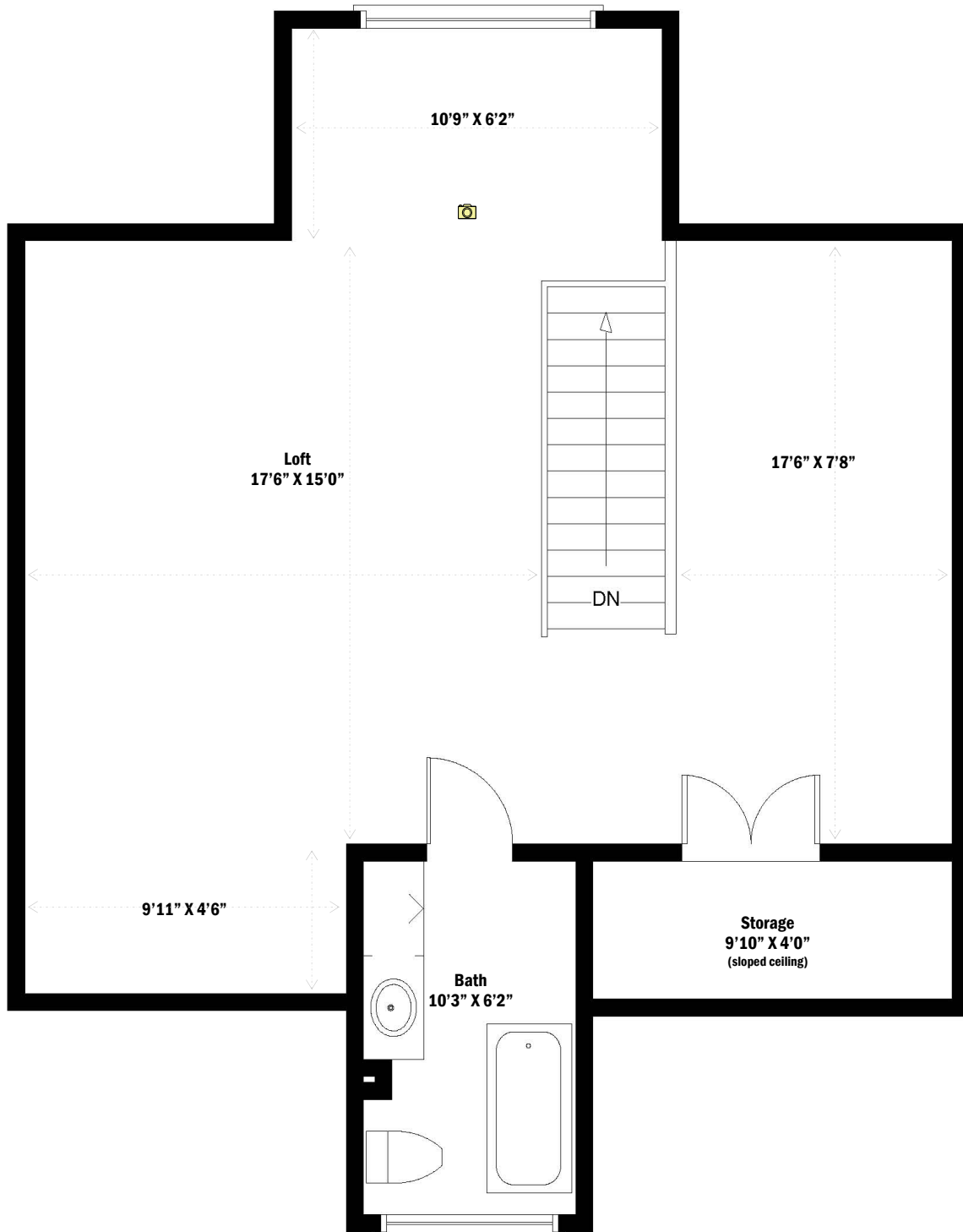


Main Level

Approx. sq. ft.: 2,151

This floor plan is an artistic rendering only. All dimensions are approximate. Defined Lines and the listing agent make no representation or warranty as to this rendering's accuracy and no measurements or dimensions should be relied upon without independent verification.

15 Sullivan Street, Port Hope

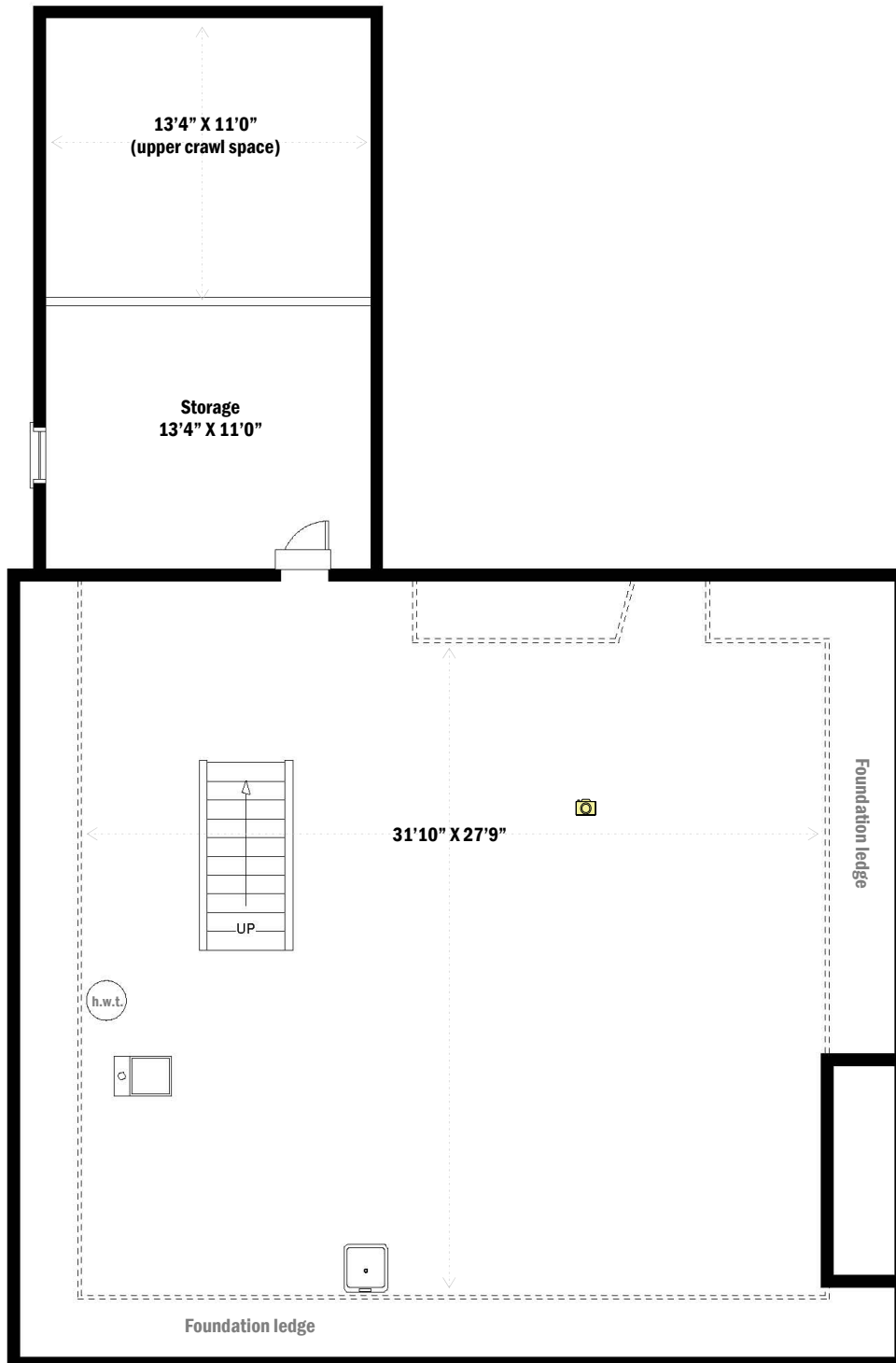


Loft Suite

Approx. sq. ft.: 757

This floor plan is an artistic rendering only. All dimensions are approximate. Defined Lines and the listing agent make no representation or warranty as to this rendering's accuracy and no measurements or dimensions should be relied upon without independent verification.

15 Sullivan Street, Port Hope

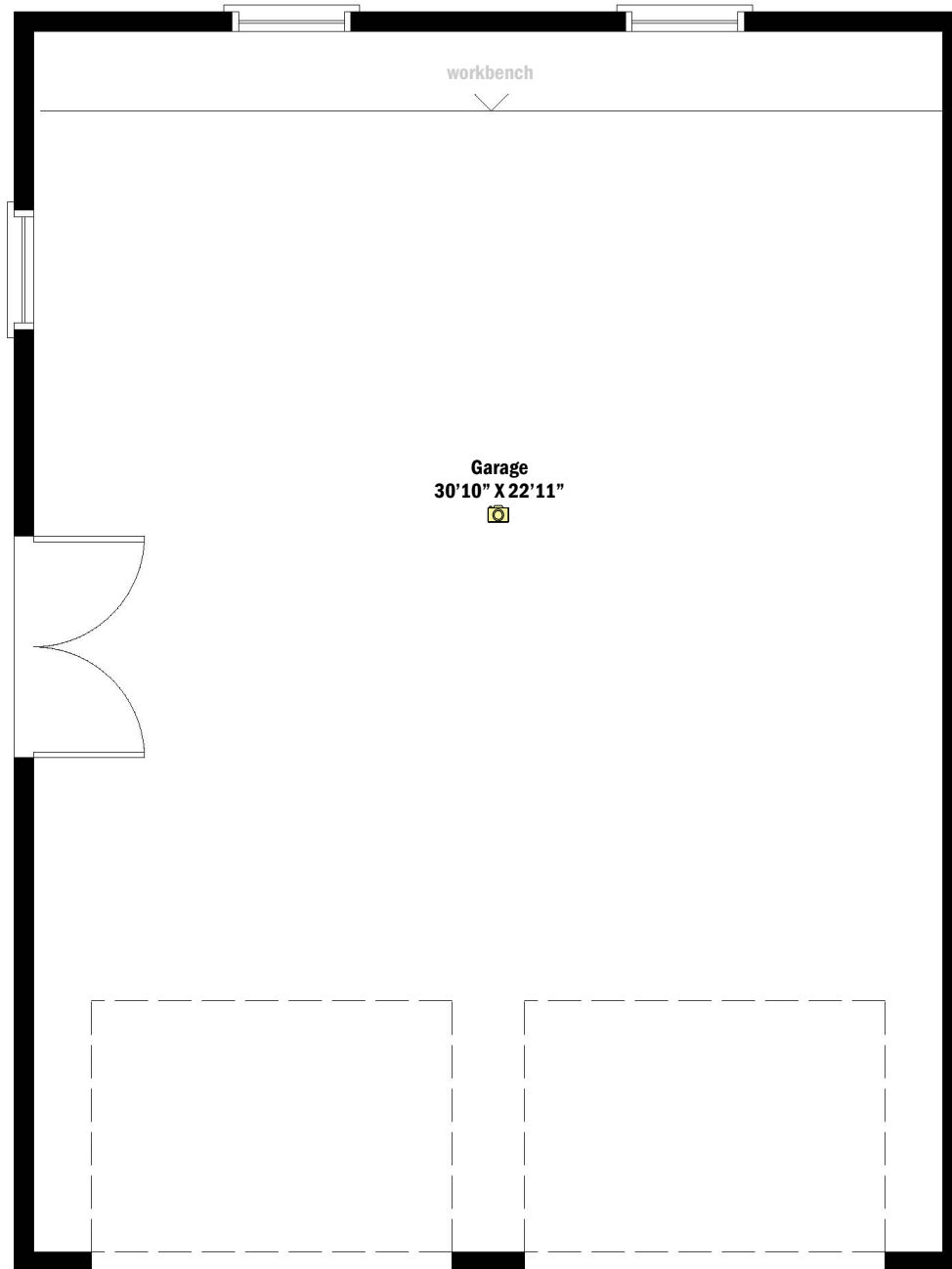


Lower Level

Approx. sq. ft.: 1,598

This floor plan is an artistic rendering only. All dimensions are approximate. Defined Lines and the listing agent make no representation or warranty as to this rendering's accuracy and no measurements or dimensions should be relied upon without independent verification.

15 Sullivan Street, Port Hope



Garage / Workshop

Approx. sq. ft.: 757

This floor plan is an artistic rendering only. All dimensions are approximate. Defined Lines and the listing agent make no representation or warranty as to this rendering's accuracy and no measurements or dimensions should be relied upon without independent verification.