



MLS#: 2070834

2374 Rednersville Rd.  
Prince Edward County, ON

## MAIN FLOOR



**Chuck Slik**  
A Sense of Place Realty Ltd., Brokerage


340 Main St.  
Picton, ON K0K 2T0

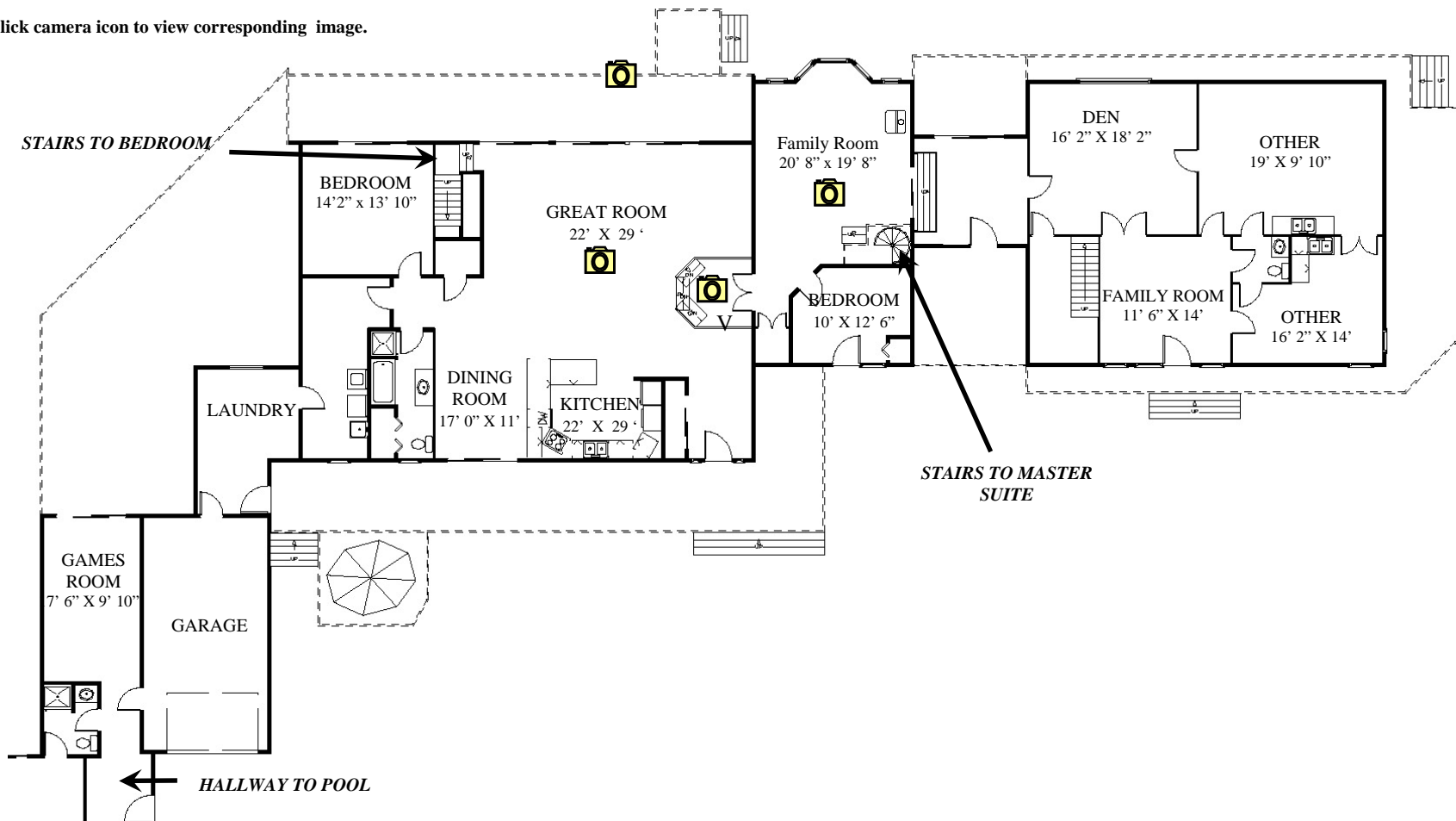
**Phone:** 613-471-1708 / 888-755-2738

**Email:** [asenseofplacerealty@bellnet.ca](mailto:asenseofplacerealty@bellnet.ca)

**Website:** [www.asenseofplace.ca](http://www.asenseofplace.ca)



 Click camera icon to view corresponding image.

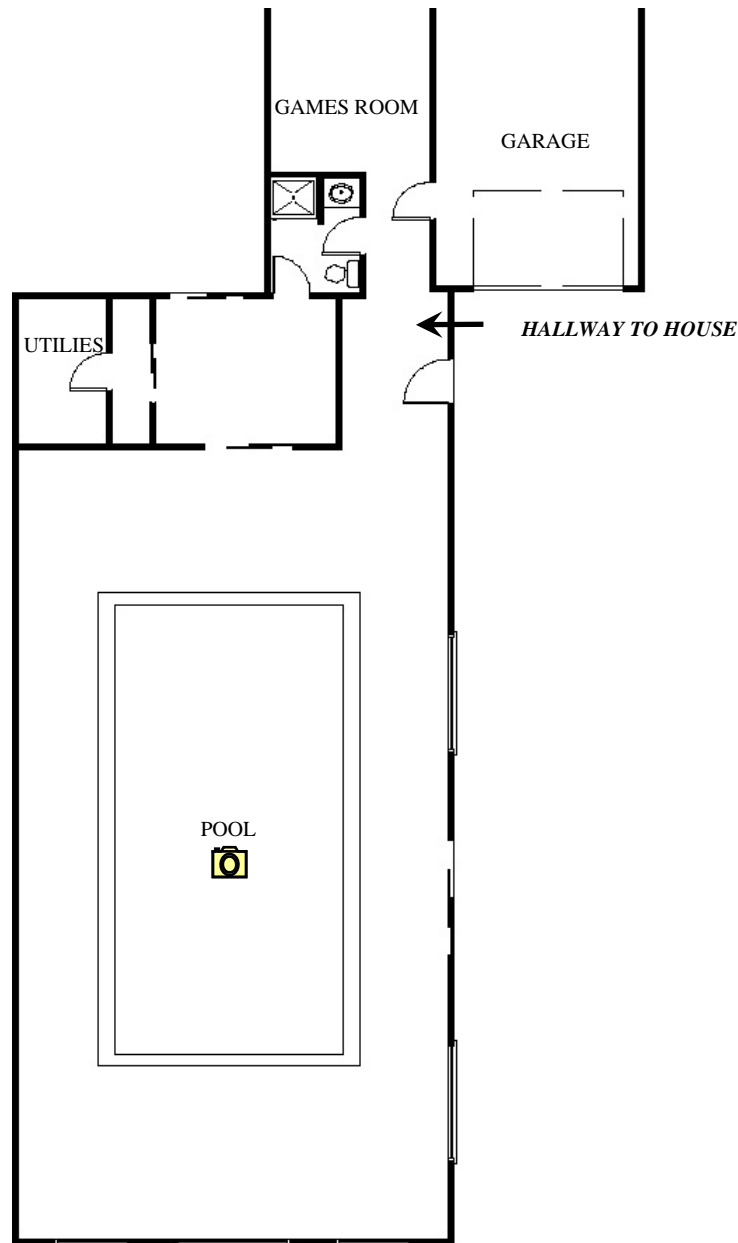


Note: This floor plan is an artistic rendering only. All dimensions are approximate. Defined Lines and the listing agent make no representation or warranty as to this rendering's accuracy and no measurements or dimensions should be relied upon without independent verification.

MLS#: 2070834

2374 Rednersville Rd.  
Prince Edward County, ON

## POOL AREA



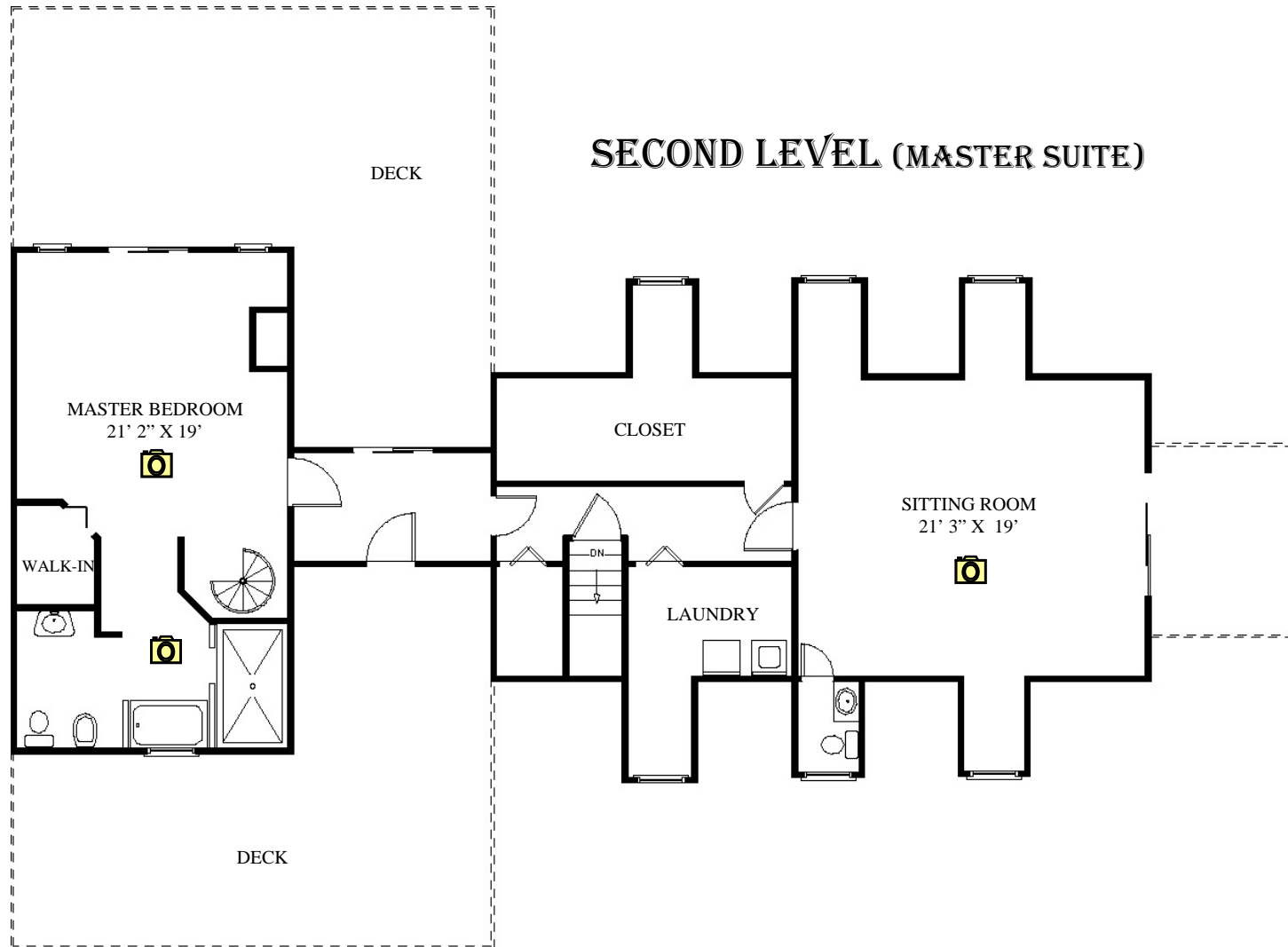
**Chuck Slik, A Sense of Place Realty Ltd., Brokerage**

Tel: 888-755-2738, E-mail: [asenseofplacerealty@bellnet.ca](mailto:asenseofplacerealty@bellnet.ca), Website: [www.asenseofplace.ca](http://www.asenseofplace.ca)

Note: This floor plan is an artistic rendering only. All dimensions are approximate. Defined Lines and the listing agent make no representation or warranty as to this rendering's accuracy and no measurements or dimensions should be relied upon without independent verification.

MLS#: 2070834

2374 Rednersville Rd.  
Prince Edward County, ON



**Chuck Slik, A Sense of Place Realty Ltd., Brokerage**

Tel: 888-755-2738, E-mail: [asenseofplacerealty@bellnet.ca](mailto:asenseofplacerealty@bellnet.ca), Website: [www.asenseofplace.ca](http://www.asenseofplace.ca)

Note: This floor plan is an artistic rendering only. All dimensions are approximate. Defined Lines and the listing agent make no representation or warranty as to this rendering's accuracy and no measurements or dimensions should be relied upon without independent verification.

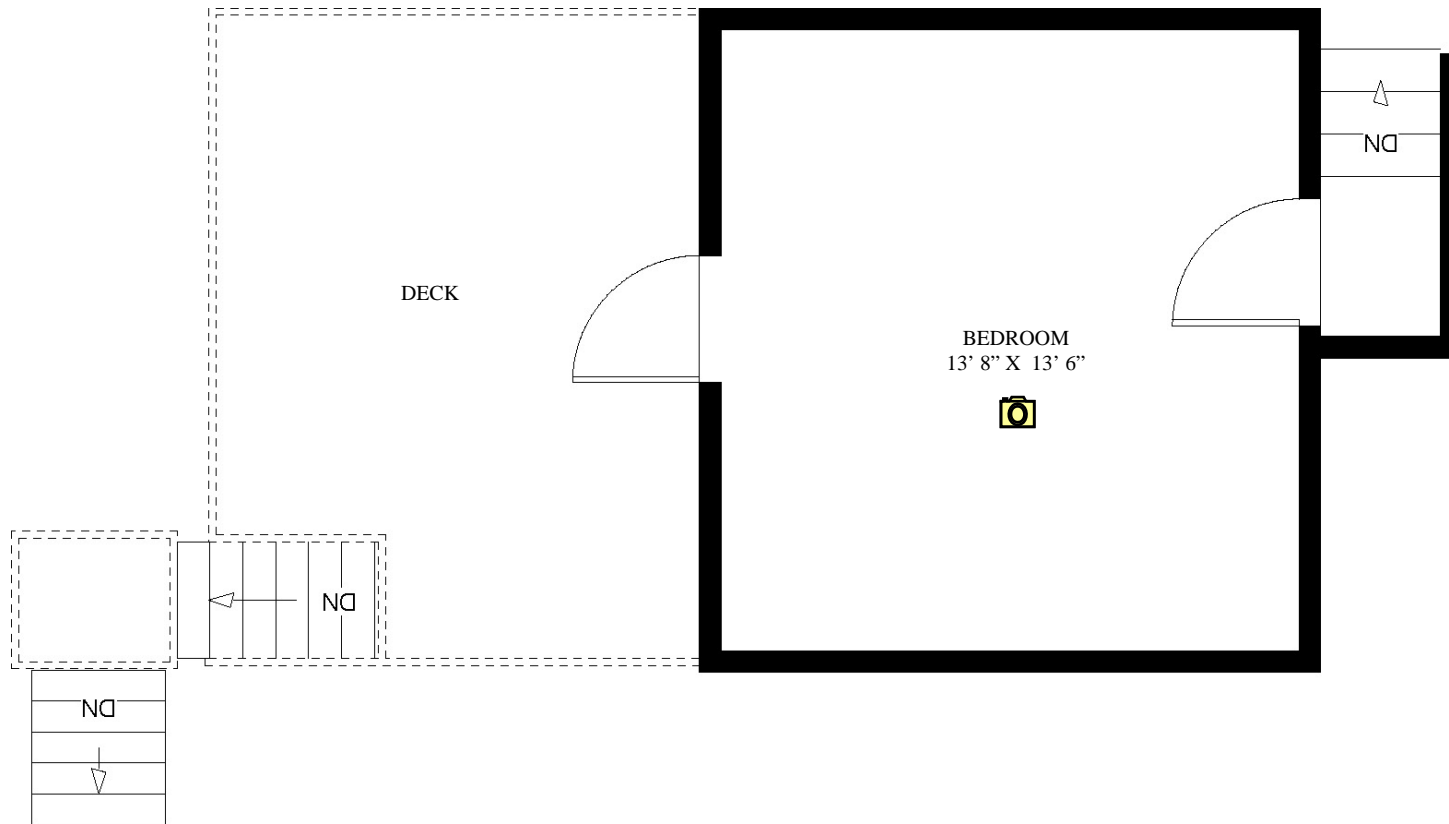


MLS#: 2070834

2374 Rednersville Rd.  
Prince Edward County, ON



## SECOND LEVEL (BEDROOM)



**Chuck Slik, A Sense of Place Realty Ltd., Brokerage**

Tel: 888-755-2738, E-mail: [asenseofplacerealty@bellnet.ca](mailto:asenseofplacerealty@bellnet.ca), Website: [www.asenseofplace.ca](http://www.asenseofplace.ca)

Note: This floor plan is an artistic rendering only. All dimensions are approximate. Defined Lines and the listing agent make no representation or warranty as to this rendering's accuracy and no measurements or dimensions should be relied upon without independent verification.

